

ACCESS SELECTION



Prairie View Industries

MAKING ACCESS A WAY OF LIFE



• PORTABLE RAMPS • TREKAWAY • MODULAR RAMPS •

WWW.PVIRAMPS.COM

Distributed in SE Wisconsin through:



877-917-2273

SINGLEFOLD RAMP Prairie View Industries, Inc.



- Lightweight, easy-to-handle and set up
- Folds in half, carries like a suitcase*
- Durable welded construction
- Full platform provides excellent stability
- Anti-slip, high traction surface
- Accommodates wheelchairs and scooters with various wheel configurations
- Safety DVD and steel security pins included

Listed by Underwriters Laboratories Inc.



Custom widths are available. Give your specifications to your local PVI retailer!

Item Number	Length	Width	Folded Size	Weight	Capacity*
SFW230	2'	30"	24" x 16" x 4.875"	10 lbs.	600 lbs.
SFW330	3'	30"	36" x 16" x 4.875"	15 lbs.	600 lbs.
SFW430	4'	30"	48" x 16" x 4.875"	20 lbs.	600 lbs.
SFW530	5'	30"	60" x 16" x 4.875"	24 lbs.	600 lbs.
SFW630***	6'	30"	72" x 16" x 4.875"	28 lbs.	600 lbs.

Not sure which ramp length you need? Refer to pages 20 - 23 to help you.

*Handle not included on SFW230. ** Maximum ramp capacity: 300 lbs. (one axle) – 600 lbs. (two axles). ***SFW630 is not listed by Underwriters Laboratories, Inc. but has been safety tested to comply with their standards.





- Separates into two pieces for easy carrying
- Rotation of pin either locks or allows ramp to be separated into two pieces
- Folds, carries like a suitcase
- Patented hinge eliminates pinch point
- Closure strap locks ramp panels together
- Lightweight, easy-to-handle & set up
- Durable welded construction
- Safety guide indicates if ramp is on a safe slope
- Full platform provides excellent stability
- Anti-slip, high traction surface
- Accommodates wheelchairs and scooters with various wheel configurations
- Safety DVD and steel security pins included

Listed by Underwriters Laboratories Inc.



Custom widths are available. Give your specifications to your local PVI retailer!

Item Number	Length	Width	Folded Size	Weight	Capacity*
WCR530	5'	30"	32.25" x 16" x 9"	30 lbs.	600 lbs.
WCR630	6'	30"	38.25" x 16" x 9"	35 lbs.	600 lbs.
WCR730	7'	30"	44.25" x 16" x 9"	39 lbs.	600 lbs.
WCR830	8'	30"	50.75" x 16" x 9.5"	52 lbs.	600 lbs.
WC1030	10'	30"	62.75" x 16" x 9.5"	63 lbs.	500 lbs.
WC1230	12'	30"	74.75" x 16" x 9.5"	73 lbs.	500 lbs.

Not sure which ramp length you need? Refer to pages 20 - 23 to help you.



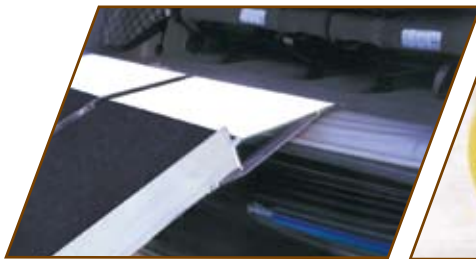
* Maximum ramp capacity: 300 lbs. (one axle) - 600 lbs. (two axles). Except on WC1030 & WC1230. Maximum ramp capacity: 250 lbs. (one axle) - 500 lbs (two axles).





- Extended hook to clear rear bumper
- Red straps included for tailgate usage
- Separates into two pieces for easy carrying
- Rotation of pin either locks or allows ramp to be separated into two pieces
- Folds, carries like a suitcase
- Patented hinge eliminates pinch point
- Closure strap locks ramp panels together
- Lightweight, easy-to-handle & set up
- Durable welded construction
- Full platform provides excellent stability
- Anti-slip, high traction surface
- Accommodates wheelchairs and scooters with various wheel configurations
- Safety DVD and steel security pins included

Listed by Underwriters Laboratories Inc.



Safety guide indicates if ramp is on a safe slope!

Item Number	Length	Width	Folded Size	Weight	Capacity*
UTW630	6'	30"	38.25" x 16" x 10.75"	36 lbs.	600 lbs.
UTW730	7'	30"	44.25" x 16" x 10.75"	41 lbs.	600 lbs.
UTW830	8'	30"	50.75" x 16" x 11"	52 lbs.	600 lbs.
UTW1030	10'	30"	62.75" x 16" x 11"	63 lbs.	500 lbs.

Not sure which ramp length you need? Refer to pages 20 - 23 to help you.

* Maximum ramp capacity: 300 lbs. (one axle) – 600 lbs. (two axles). Except on WC1030 & WC1230.
Maximum ramp capacity: 250 lbs. (one axle) – 500 lbs (two axles).





- Full platform provides excellent stability
- Durable welded construction
- Anti-slip, high traction surface
- Accommodates wheelchairs and scooters with various wheel configurations
- Safety DVD and steel security pins included

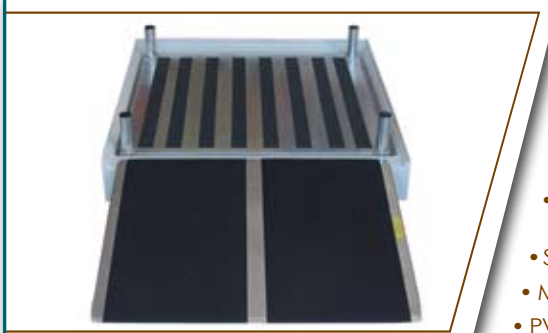
Listed by Underwriters Laboratories Inc.

Custom widths are available. Give your specifications to your local PVI retailer!

Item Number	Length	Width	Weight	Capacity*
SL330	3'	30"	15 lbs.	600 lbs.
SL336	3'	36"	18 lbs.	600 lbs.
SL430	4'	30"	20 lbs.	600 lbs.
SL436	4'	36"	23 lbs.	600 lbs.
SL530	5'	30"	25 lbs.	600 lbs.
SL536	5'	36"	30 lbs.	600 lbs.

LIMITED LIFETIME WARRANTY

* Maximum ramp capacity: 300 lbs. (one axle) – 600 lbs. (two axles).



- Economical solution to raise shower floors to accommodate wheelchairs
- Custom built to fit existing shower basins in rectangular shapes only
- Durable lightweight aluminum construction, will not rust
- Perforated surface allows water to drain through easily
- Surface contains strips of anti-slip traction tape
- Minimum height requirement is 2.5"
- PVI threshold ramp will be required to access shower platform (sold separately)

Width:	Built to your specifications
Length:	Built to your specifications
Load Capacity:	400 Pounds on two axles
Surface:	Slip resistant traction tape

LIMITED LIFETIME WARRANTY





- Designed for doorways
- Holes punched in top corners for easy installation
- Lightweight, durable aluminum
- Anti-slip, high traction surface
- Hardware provided to secure ramp to surface

LIMITED LIFETIME WARRANTY

Item Number	Length	Width	Threshold Height	Weight	Capacity*
THR832	8"	32"	0.25" - 0.5"	3 lbs.	600 lbs.
TH1032	10"	32"	0.5" - 0.75"	4 lbs.	600 lbs.
TH1232	12"	32"	0.75" - 1.5"	5 lbs.	600 lbs.
TH1632	16"	32"	1.5" - 2"	6 lbs.	600 lbs.
TH1636	16"	36"	1.5" - 2"	6 lbs.	600 lbs.
TH2432	24"	32"	2" - 4"	12 lbs.	600 lbs.
TH2436	24"	36"	2" - 4"	15 lbs.	600 lbs.

* Maximum ramp capacity: 300 lbs. (one axle) – 600 lbs. (two axles).

SELF SUPPORTING THRESHOLD RAMP

LIMITED LIFETIME WARRANTY



- Designed for doorways that swing out
- Durable welded construction
- Anti-slip, high traction surface
- Aligns directly against the door threshold



Item Number	Length	Width	Threshold Height	Weight	Capacity*
SSTH1636-1.5	16"	36"	1.5" Rise	8 lbs.	600 lbs.
SSTH2436-2	24"	36"	2" Rise	12 lbs.	600 lbs.
SSTH2436-2.5	24"	36"	2.5" Rise	12 lbs.	600 lbs.
SSTH2436-3	24"	36"	3" Rise	12 lbs.	600 lbs.

* Maximum ramp capacity: 300 lbs. (one axle) – 600 lbs. (two axles).



- No load weight limitations
- Molded miter ends
- Made of 100% recycled rubber
- Designed and tested for maximum slip resistance
- Field fitted with simple cutting tools
- Simple installation in 15 to 25 mins.
- No fasteners required for installation
- Foot traffic is quiet and solid
- Only available in black
- Comes with Limited Lifetime Warranty

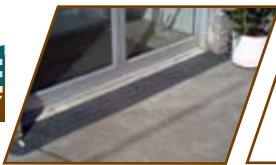
Item Number	Length	Width	Usable Width	Threshold Height	Weight
RAEZ0110	8.125"	42"	36.25"	0.875" Rise	9 lbs.
RAEZ1110	12.25"	42"	36.25"	1.25" Rise	17 lbs.
RAEZ1510	18.125"	50"	41"	1.75" Rise	36 lbs.
RAEZ2100	24"	60"	50"	2" Rise	62 lbs.

StoneCap™ RUBBER THRESHOLD RAMP



- No load weight limitations
- Molded miter ends
- Made of 100% recycled rubber
- Designed and tested for maximum slip resistance
- Field fitted with simple cutting tools
- Simple installation in 15 to 25 mins.
- No fasteners required for installation
- Foot traffic is quiet and solid
- StoneCap™ colors shown below*

LIMITED LIFETIME WARRANTY



*Colors vary slightly due to printing.

Item Number	Length	Width	Usable Width	Threshold Height	Weight
STC0110	8.125"	42"	36.25"	0.875"	9 lbs.
STC1110	12.25"	42"	36.25"	1.25"	17 lbs.
STC1510**	18.125"	50"	41"	1.75"	36 lbs.

*Check for color availability. **STC1510 only available in Nutmeg Color.



- Separates into two pieces for easy carrying
- Rotation of pin either locks or allows ramp to be separated into two pieces
- Folds, carries like a suitcase
- Patented hinge eliminates pinch point
- Closure strap locks ramp panels together
- Durable welded construction
- Safety guide indicates if ramp is on a safe slope
- Anti-slip, high traction surface
- Accommodates wheelchairs and scooters with various wheel configurations
- Safety DVD and steel security pins included



Item Number	Length	Width	Folded Size	Weight	Capacity*
BAR536	5'	36"	32.25" x 17.5" x 11.5"	50 lbs.	800 lbs.
BAR636	6'	36"	38.25" x 17.5" x 11.5"	58 lbs.	800 lbs.
BAR736	7'	36"	44.25" x 17.5" x 11.5"	67 lbs.	800 lbs.
BAR836	8'	36"	50.75" x 17.5" x 11.5"	76 lbs.	800 lbs.

Not sure which ramp length you need? Refer to pages 20 - 23 to help you.

* Maximum ramp capacity: 400 lbs. (one axle) – 800 lbs. (two axles).





- Three interlocking lightweight ramp sections
- Additional panels used to increase ramp widths
- Outside panels feature 1.5" curbing
- Anti-slip high traction surface
- Durable welded construction
- Safety DVD and steel security pins included
- Accommodates wheelchairs and scooters with various wheel configurations

Item Number	Length	Width	Weight	Capacity*	Item Number	Length	Width	Weight
BPR348	3'	47.25"	24 lbs.	800 lbs.	BPRS317	3'	17.875"	9 lbs.
BPR448	4'	47.25"	32 lbs.	800 lbs.	BPRS417	4'	17.875"	12 lbs.
BPR548	5'	47.25"	46 lbs.	800 lbs.	BPRS517	5'	17.875"	17 lbs.
BPR648	6'	47.25"	56 lbs.	800 lbs.	BPRS617	6'	17.875"	21 lbs.

* Maximum ramp capacity: 400 lbs. (one axle) – 800 lbs. (two axles)

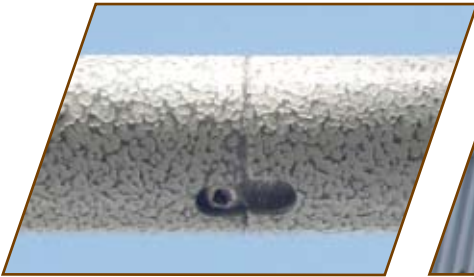


- Designed for doorways
- Holes punched in top corners for easy installation
- Lightweight, durable aluminum
- Anti-slip high traction surface
- Hardware provided to secure ramp to surface

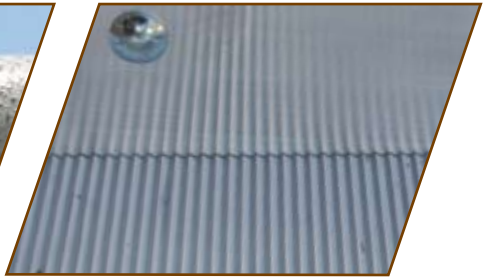
Item Number	Length	Width	Threshold Height	Weight	Capacity*
BAR1636	16"	36"	1.5" - 2"	12 lbs.	800 lbs.
BAR2436	24"	36"	2" - 4"	21 lbs.	800 lbs.

* Maximum ramp capacity: 400 lbs. (one axle) – 800 lbs. (two axles).





Smooth Handrail Transitions



Deeper Tread

Installs in 1/4 the time as our original modular ramp system!



Fewer Hardware for Quick Setup

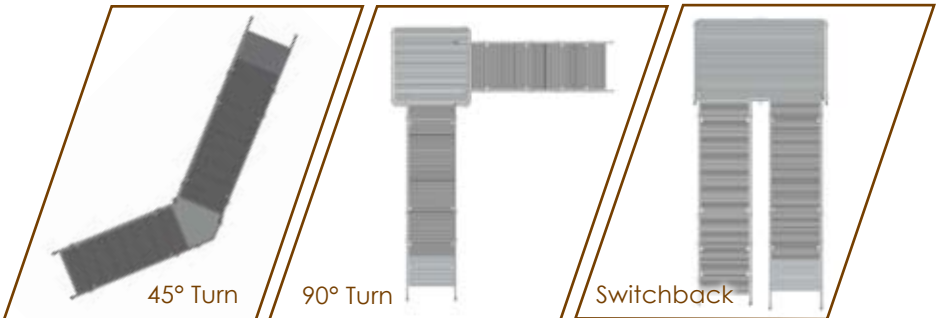


Bubble Levels on Every Landing



- Ramp sections are welded in lengths of 4', 5', 6', 7' & 8'
- Handrails are powder coated white
- Can be easily moved or reconfigured
- Durable and weather resistant
- Little or no site preparation required
- All aluminum construction
- Little or no maintenance
- 45° and 90° turns and switchbacks
- Multiple configurations possible
- ADA handrail extensions, guardrails and gates available
- Accommodates a rise up to 60"
- Comes with a Limited lifetime warranty*

LIMITED LIFETIME WARRANTY



Multiple configurations possible!

Width	36"
Length	As Required - 4' minimum
Load Capacity	100 lbs. per square foot
Slope	Adjustable - as required
Floor	Slip resistant grooved aluminum
Edge Protection	2" Curb
Handrails	Double 1.5" bar - standard height 36" - 38"

* Powder coated handrails not included in Limited Lifetime Warranty.



TREKAWAY SERIES

MT1000 Prairie View Industries, Inc.

TILTING PLATFORM LIFT



- Made with a steel underframe for greater weight capacity
- Aluminum platform provides weight savings and corrosion resistance
- Welded construction for superior strength
- Platform makes 45° Tilt for lift gate clearance
- Accommodates scooters up to 350 lbs.
- Front wheels fit on chock plate for extra stability
- Key turns motor on and off
- Simple up and down switch operation
- Self leveling platform made to accommodate varying sloped surfaces
- Stabilizer Hitch Pin included
- Optional license plate holder - LPH1 (Page 17)

**ONE YEAR
WARRANTY**



Platform makes 45° tilt for lift gate clearance.

Model Number	MT1000
Platform Dimensions	48"L x 27.5"W
Compatibility	Class III or IV Hitch
Class III & IV Load Capacity	350 lbs.
Surface	Slip resistant traction tape
Weight of Carrier	82 lbs.

PVI

HITCH MOUNTED ARM LIFT



- Lifts scooter or power chair from ground level to height needed for easy loading
- Arm lift is adjustable in both length and height
- Disassembles for easy storage
- Welded construction for superior strength
- Made with steel for strength and durability
- Simple up and down operation
- Hitch mount base is powder coated for corrosion resistance



**ONE YEAR
WARRANTY**

Model Number	MT2000H
Lifting Capacity	200 lbs.
Compatibility	Class II*, III or IV Hitch
Heaviest Component	18 lbs.

Need a Trunk Mounted Arm Lift? Turn the page. ➔



TRUNK MOUNTED ARM LIFT



- Lifts scooter or power chair from ground level to height needed for easy loading
- Arm lift is adjustable in both length and height
- Disassembles for easy storage
- Welded construction for superior strength
- Made with steel for strength and durability
- Simple up and down operation
- Hitch mount base is powder coated for corrosion resistance
- Includes adapter for use with trunks that have a false bottom



Need
a Hitch
Mounted
Arm Lift?
Turn the
← page.

**ONE YEAR
WARRANTY**

Model Number	MT2000T
Lifting Capacity	200 lbs.
Heaviest Component	18 lbs.



CARRIER WITH 4' RAMP



- Welded construction for superior strength; no assembly required
- Little or no maintenance
- Made with a steel underframe for greater weight capacity
- Completely powder coated plus an aluminum platform and ramp make carrier corrosion resistant
- Anti-slip, high traction surface
- Optional hitch height adapter (AHA12) available for vehicles with hitch clearance less than 12" (page 17)
- Optional Class II Hitch Adapter (C2HA) required for 1.25" hitch receiver (Page 17)
- Optional Class II hitch height adapter (C2AHA7) required for 1.25" hitch receiver with hitch clearance less than 12" (Page 17)

**ONE YEAR
WARRANTY**



Model Number	MT3000
Platform Dimensions	51"L x 32"W x 8"H
Inside Platform Dimensions	48"L x 30"W x 6.75"H
Ramp Dimensions	48"L x 26"W
Class III & IV Load Capacity	350 lbs.
Class II Load Capacity	350 lbs. - Refer to vehicle owner's manual
Surface	Slip resistant traction tape
Compatibility	Class II*, III or IV hitch
Weight of Carrier	70 lbs.

Need a longer ramp for your carrier? Turn the page. ➔



*Class II hitch requires optional Class II Hitch Adapter (C2HA)

CARRIER WITH 6' RAMP



- Side rails run along 6' ramp
- Welded construction for superior strength; no assembly required
- Little or no maintenance
- Made with a steel underframe for greater weight capacity
- Completely powder coated plus an aluminum platform and ramp make carrier corrosion resistant
- Anti-slip, high traction surface
- Optional hitch height adapter (AHA12) available for vehicles with hitch clearance less than 12" (page 17)
- Optional Class II Hitch Adapter (C2HA) required for 1.25" hitch receiver (Page 17)
- Optional Class II hitch height adapter (C2AHA7) required for 1.25" hitch receiver with hitch clearance less than 12" (Page 17)

ONE YEAR WARRANTY



Need a shorter ramp for your carrier? Turn the ← page.

Model Number	MT3100
Platform Dimensions	57"L x 32"W x 8"H
Inside Platform Dimensions	54"L x 30"W x 6.75"H
Ramp Dimensions	72"L x 25.75"W
Class III & IV Load Capacity	350 lbs.
Class II Load Capacity	350 lbs. - Refer to vehicle owner's manual
Surface	Slip resistant traction tape
Compatibility	Class II*, III or IV hitch
Weight of Carrier	90 lbs.

*Class II hitch requires optional Class II Hitch Adapter (C2HA)

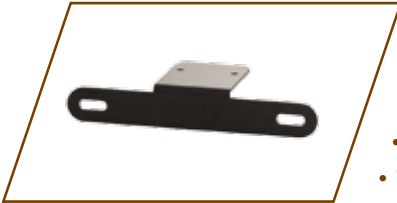


HITCH MOUNTED ACCESSORIES - ALL MODELS



Stabilizer Hitch Pin - HPS34

- Used to tighten and quiet carriers connected to vehicle hitch
- Zinc coated for corrosion resistance
- For use with any hitch
- Weight is 1 lb.
- Optional padlock available



License Plate Holder - LPH1

- Made of steel for superior strength
- Powder coated for corrosion resistance
- For use with MT1000, MT3000 & MT3100
- Weight is 1 lb.

HITCH MOUNTED ACCESSORIES - MT3000 & MT3100



Tilting Hitch Adapter - THMA

- Used to tilt carriers upright when not in use
- Made of steel for superior strength
- Powder coated for corrosion resistance
- Weight is 13 lbs.



Hitch Height Adapter - AHA12

- Adjusts height of carrier up to 8"
- Recommended for vehicles with hitch clearance less than 12"
- Made of steel for superior strength
- Powder coated for corrosion resistance
- Fits 2" hitch receiver
- Weight is 16 lbs.



Class II Hitch Ht. Adapter - C2AHA7

- Fits 1.25" hitch receiver
- Adjusts height of carrier up 6"
- Recommended for vehicles with hitch clearance less than 12"
- Made of steel for superior strength
- Powder coated for corrosion resistance
- Weight is 16 lbs.



Class II Hitch Adapter - C2HA

- Used to attach carriers to a 1.25" hitch receiver
- Made of steel for superior strength
- Powder coated for corrosion resistance
- Weight is 6 lbs.



VAN RAMP

SIDE DOOR VAN RAMP Prairie View Industries, Inc.



- Easy installation
- Mounts to floor of van inside doorway
- Folds in quarters and stores vertically, leaving door way accessible
- Patented center joint hinge eliminates pinch point and adds strength
- Durable welded construction
- Anti-slip, high traction surface
- Accommodates wheelchairs and scooters with various wheel configurations
- Not compatible with vans that have stow away seating



Listed by Underwriters Laboratories Inc.



NOTE: Minimum requirement for floor to ceiling opening: 6' ramp - 42", 7' ramp - 46"

LIMITED LIFETIME WARRANTY

Item Number	Length	Width	Folded Size	Weight	Capacity*
SDR626	6'	26"	38" x 13.5" x 8.75"	32 lbs.	600 lbs.
SDR628	6'	28"	38" x 14.5" x 8.75"	33 lbs.	600 lbs.
SDR728	7'	28"	44.5" x 14.5" x 8.75"	38 lbs.	600 lbs.

**Maximum ramp capacity: 300 lbs. (one axle) – 600 lbs. (two axles).*





- Easy installation**
- Mounts to floor of van inside doorway
- Three sections, manually operated with spring assist
- Easily operated by one person
- Stores vertically inside doorway
- Durable welded construction
- Anti-slip, high traction surface
- Accommodates wheelchairs and scooters with various wheel configurations
- Not compatible with vans that have stow away seating

NOTE: Minimum inside door opening required for this ramp is 34". Minimum requirement for floor to ceiling opening: 7' ramp-37", 8' ramp-41".



Listed by Underwriters Laboratories Inc.

Item Number	Length	Unfolded Size	Folded Height	Weight	Capacity*
VAN727	7'	7' X 27"	36"	72 lbs.	600 lbs.
VAN827	8'	8' X 27"	40"	77 lbs.	600 lbs.

* Maximum ramp capacity: 400 lbs. (one axle) – 800 lbs. (two axles).
 ** Conversion kit is required if rear door opening contains a threshold.

VAN RAMP ADAPTOR



- Reduces ramp slope and eases entry
- Lightweight, durable aluminum
- Anti-slip high traction surface
- Lightweight, easy-to-handle and set up
- For use with Van Ramp models VAN727 and VAN827



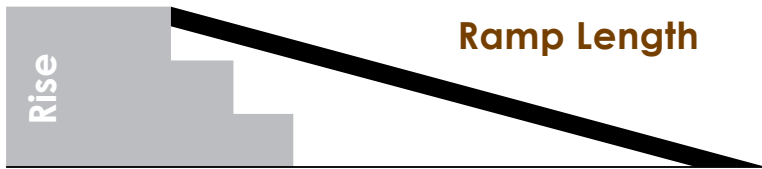
Item Number	Description	Size	Weight	Capacity*
VAN2426.75	One Piece	24" X 26.75"	8 lbs.	600 lbs.



* Maximum ramp capacity: 300 lbs. (one axle) – 600 lbs. (two axles).

RAMP SELECTION GUIDE

RAMP MODEL SELECTION GUIDE Prairie View Industries, Inc.



- To select your ramp model, first determine the rise of your application (see the figure above).
- Find your maximum rise and scan across to find the proper ramp in the far left column (on next page).
- Never exceed a slope greater than 2" on 12" with an occupied chair or scooter.
- If you are still unsure which ramp best fits your needs, please contact your local retailer or PVI. We would be happy to assist you.



Item Number	Description	Recommend (1:12 Slope Ratio)	Maximum Rise Occupied (2:12 Slope Ratio)	Maximum Rise Unoccupied (3:12 Slope Ratio)
SFW230	Singlefold 2' x 30"	2"	4"	6"
SFW330	Singlefold 3' x 30"	3"	6"	9"
SFW430	Singlefold 4' x 30"	4"	8"	12"
SFW530	Singlefold 5' x 30"	5"	10"	15"
SFW630	Singlefold 6' x 30"	6"	12"	18"
WCR530	Multifold 5' x 30"	5"	10"	15"
WCR630	Multifold 6' x 30"	6"	12"	18"
WCR730	Multifold 7' x 30"	7"	14"	21"
WCR830	Multifold 8' x 30"	8"	16"	24"
WC1030	Multifold 10' x 30"	10"	20"	30"
WC1230	Multifold 12' x 30"	12"	24"	36"
UTW630	Utility Ramp 6' x 30"	6"	12"	18"
UTW730	Utility Ramp 7' x 30"	7"	14"	21"
UTW830	Utility Ramp 8' x 30"	8"	16"	24"
UTW1030	Utility Ramp 10' x 30"	10"	20"	30"
SL330	Solid 3' x 30" Ramp	3"	6"	9"
SL336	Solid 3' x 36" Ramp	3"	6"	9"
SL430	Solid 4' x 30" Ramp	4"	8"	12"
SL436	Solid 4' x 36" Ramp	4"	8"	12"
SL530	Solid 5' x 30" Ramp	5"	10"	15"
SL536	Solid 5' x 36" Ramp	5"	10"	15"
BAR536	Bariatric Multifold 5' x 36"	5"	10"	15"
BAR636	Bariatric Multifold 6' x 36"	6"	12"	18"
BAR736	Bariatric Multifold 7' x 36"	7"	14"	21"
BAR836	Bariatric Multifold 8' x 36"	8"	16"	24"
BPR348	Bariatric Panel 3' x 48" (3-panel)	3"	6"	9"
BPR448	Bariatric Panel 4' x 48" (3-panel)	4"	8"	12"
BPR548	Bariatric Panel 5' x 48" (3-panel)	5"	10"	15"
BPR648	Bariatric Panel 6' x 48" (3-panel)	6"	12"	18"



1. **Always** have a qualified assistant present when using any portable ramp.
2. **Never** exceed a slope greater than 2" on 12" with an **occupied** chair or scooter. **Never** exceed a slope greater than 3" on 12" with an **unoccupied** chair or scooter.
3. **Always** make sure that top of ramp is secured on step or landing before using. It may be necessary to anchor top of ramp to landing surface with steel security pins provided.
4. **Make certain** there is adequate head clearance prior to loading an **occupied** chair or scooter into a vehicle.
5. **Always** follow manufacturer recommendations for chair or scooter.
6. **Always** use your lap belt.
7. **Slope Recommendations:**

1:12 SLOPE (4.8°)

1. The ADA recommended slope for long (up to 30') home and commercial ramps.
2. Works for most strong unassisted manual chair users, although PVI always recommends assistance.

2:12 SLOPE (9.6°)

1. Maximum acceptable grade for portable ramp use by occupied chairs and scooters with a qualified assistant.

3:12 SLOPE (14.5°)

1. For loading **unoccupied** chairs and scooters.

ANY SLOPE GREATER (>14.5°)

1. PVI does **NOT** recommend.

8. **Watch** safety DVD prior to use.

To determine the length of ramp for your application, first you need to determine the rise. The rise is the vertical measurement between the ground and where the top of the ramp is going to sit.

Prairie View Industries recommends NOT to exceed a 2:12 slope on most applications. Some ramps may need to meet ADA (1:12 slope) requirements that are specified by your state. If your rise is over 24", please contact your local dealer about our modular ramp system. To find a 2:12 slope, take total amount of rise and divide by 2. If you have a 12" rise, divide by 2 and the resulting number would be the length of ramp which is required in feet or you would need a 6' ramp. A 1:12 slope would require 1 foot of ramp for every inch of rise.



Note: Consideration must be taken if the ground is not level and slopes away from the rise where ramp will be placed. Please contact your dealer for evaluation on these applications.



Ramp Incline in Degrees

Ramp Rise in Inches	Ramp Length									
	2'	3'	4'	5'	6'	7'	8'	10'	12'	
36"										14.5°
34"										13.3°
32"										12.5°
30"									14.5°	11.8°
28"									13.5°	11°
26"									12.5°	10.2°
24"							14.5°	11.5°	9.6°	
22"							13.2°	10.6°	8.7°	
20"						13.8°	12°	9.6°	7.9°	
18"					14.5°	12.4°	10.8°	8.6°	7.1°	
16"					12.8°	11°	9.6°	7.7°	6.3°	
14"				13.5°	11.2°	9.6°	8.4°	6.7°	5.6°	
12"			14.5°	11.5°	9.6°	8.2°	7.2°	5.7°	4.8°	
10"			12°	9.6°	8°	6.8°	6°	4.8°	4°	
9"		14.5°	10.8°	8.6°	7.2°	6.2°	5.4°	4.3°	3.6°	
8"		12.8°	9.6°	7.7°	6.4°	5.5°	4.8°	3.8°	3.2°	
7"		11.2°	8.4°	6.7°	5.6°	4.8°	4.2°	3.3°	2.8°	
6"	14.5°	9.6°	7.2°	5.7°	4.8°	4.1°	3.6°	2.9°	2.4°	
5"	12°	8°	6°	4.8°	4°	3.7°	3°	2.4°	2°	
4"	9.6°	6.4°	4.8°	3.8°	3.2°	2.7°	2.4°	1.9°	1.6°	
3"	7.2°	4.8°	3.6°	2.9°	2.4°	2°	1.8°	1.4°	1.2°	

Ramp Length

	2'	3'	4'	5'	6'	7'	8'	10'	12'
Singlefold (pg.2)	●	●	●	●	●				
Multifold (pg.3)				●	●	●	●	●	●
Utility (pg.4)					●	●	●	●	
Solid (pg.5)		●	●	●					
Bariatric Multifold (pg.8)				●	●	●	●		
Bariatric Panel (pg.9)		●	●	●	●				



PVI

Distributed in SE Wisconsin through:



877-917-2273

All of our products are made in the

USA

Prairie View Industries, Inc. | Fairbury, NE



Products marked with this logo are listed to applicable UL standards and requirements by Underwriters Laboratories, Inc.

122010